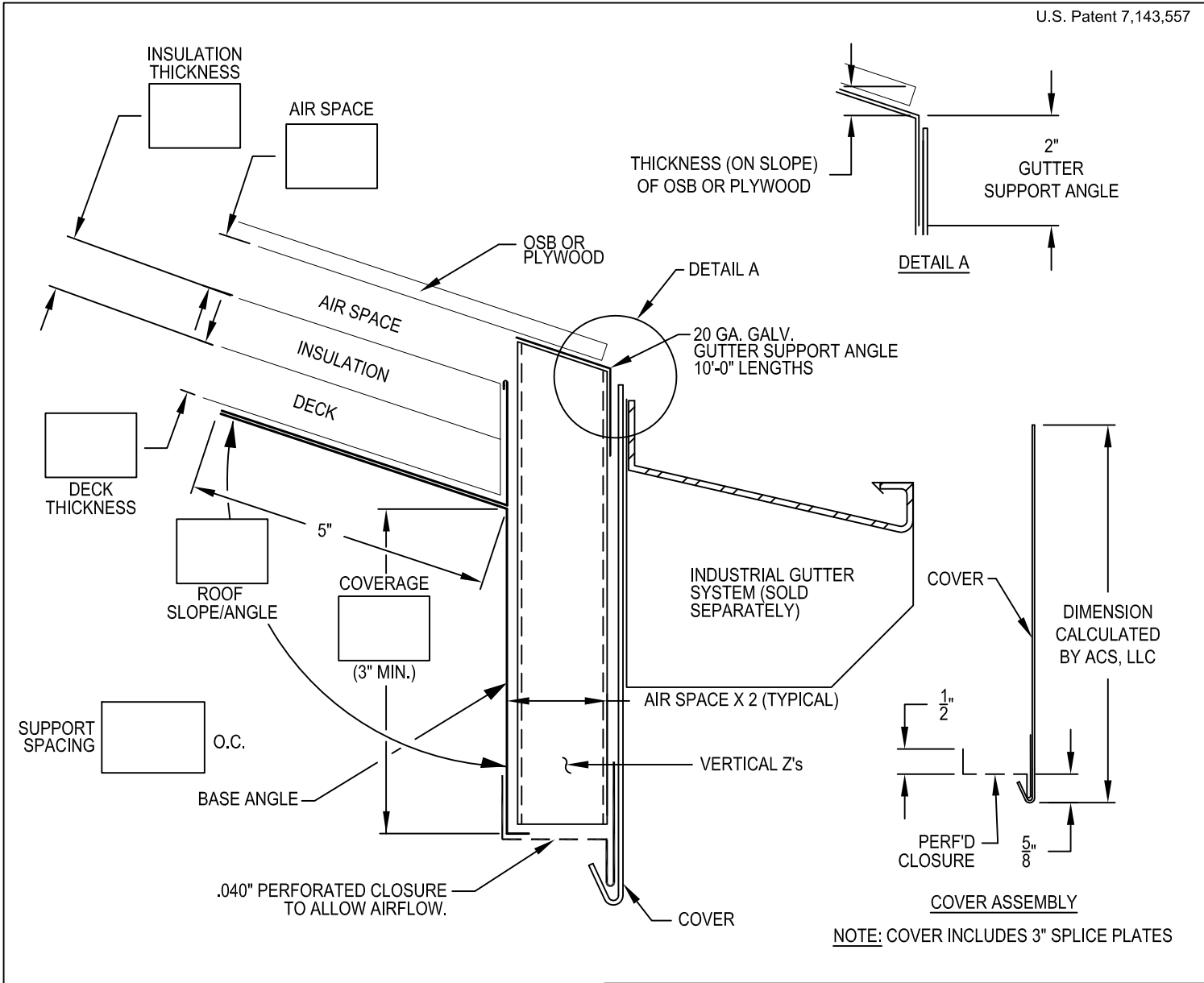


REFERENCE DETAIL:

# STRUCTEAVENT SYSTEM SV

STRUCTURAL VENTED

U.S. Patent 7,143,557



<b>COVER:</b>	
<input type="checkbox"/> 22 Ga. (.81 mm) Galv. Steel	<input type="checkbox"/> 24 Ga. (.65 mm) Galv. Steel*
<input type="checkbox"/> .040" (1.01 mm) Aluminum*	<input type="checkbox"/> .050" (1.27 mm) Aluminum
<input type="checkbox"/> .063" (1.60 mm) Aluminum	<input type="checkbox"/> Other: _____
Color: _____	Finish: _____
<b>PERFORATED CLOSURE:</b>	
<input type="checkbox"/> .040" (1.01 mm) Bone White	<input type="checkbox"/> .040" (1.01 mm) Dark Bronze
<input type="checkbox"/> .040" (1.01 mm) Sandstone	
<b>QUANTITIES:</b>	
_____ Linear Feet (10'-0" (3.05 M Lengths) Include Waste As Required	

Fabrication will proceed only after receipt of signed print approval.


**Print Approval:**

Architect and/or contractor shall verify all dimensions, sizes and quantities. All products to be installed in strict accordance with ACS, LLC printed instructions.

Approved by: \_\_\_\_\_

Date: \_\_\_\_\_

PROJECT:	
ARCHITECT:	
CONTRACTOR:	
REPRESENTATIVE:	

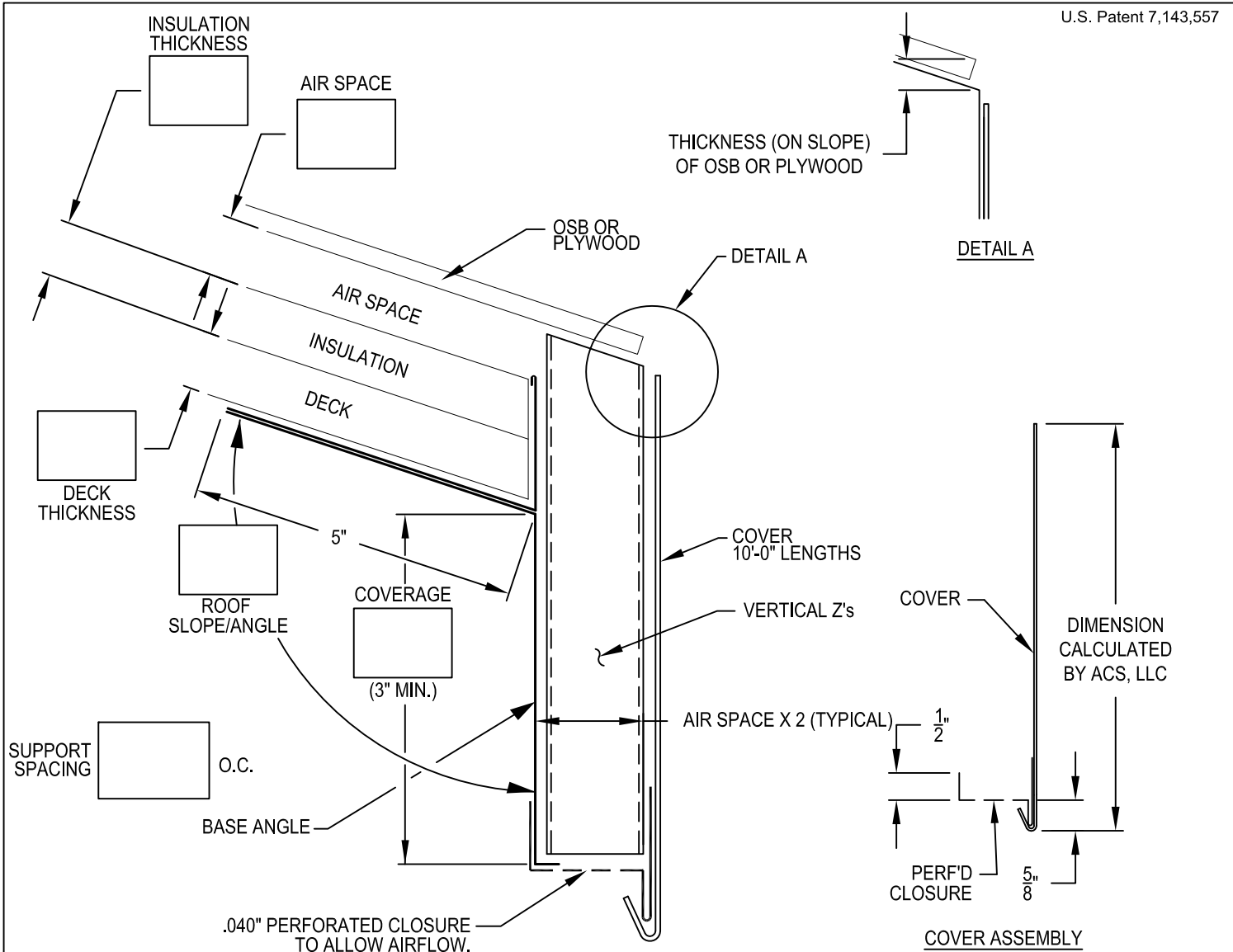
 <p><b>ACS, LLC</b> 2550 Five Star Pkwy. Phone : 877-580-9756 Suite 116 Bessemer, AL 35022 www.acs-reps.com</p>	DATE: 01/26/10	SHT.# _____ OF _____
	DRN BY: JWT	DWG# _____
	CHK BY: BS, JR.	X

REFERENCE DETAIL:

# STRUCTEAVENT SYSTEM SV

STRUCTURAL VENTED

U.S. Patent 7,143,557



NOTE: COVER INCLUDES 3" SPLICE PLATES

- COVER:**
- 22 Ga. (.81 mm) Galv. Steel
  - .040" (1.01 mm) Aluminum\*
  - .063" (1.60 mm) Aluminum
  - 24 Ga. (.65 mm) Galv. Steel\*
  - .050" (1.27 mm) Aluminum
  - Other: \_\_\_\_\_
- Color: \_\_\_\_\_ Finish: \_\_\_\_\_

- PERFORATED CLOSURE:**
- .040" (1.01 mm) Bone White
  - .040" (1.01 mm) Dark Bronze
  - .040" (1.01 mm) Sandstone

**QUANTITIES:**  
 \_\_\_\_\_ Linear Feet (10'-0" (3.05 M Lengths) Include Waste As Required)


Fabrication will proceed only after receipt of signed print approval.

## Print Approval:

Architect and/or contractor shall verify all dimensions, sizes and quantities. All products to be installed in strict accordance with ACS, LLC printed instructions.

Approved by: \_\_\_\_\_

Date: \_\_\_\_\_

PROJECT:	 <b>ACS, LLC</b> 2550 Five Star Pkwy. Phone : 877-580-9756 Suite 116 Bessemer, AL 35022 www.acs-reps.com	
ARCHITECT:		
CONTRACTOR:	DATE: 01/26/10	SHT.# _____ OF _____
REPRESENTATIVE:	DRN BY: JWT	DWG# _____
	CHK BY: BS, JR.	